

# coal

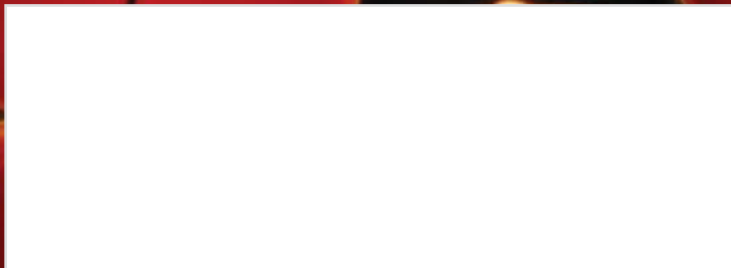
Issue 2 • 2015

# ENERGY

From the Mine to the Utility

2014 MINER'S  
MEMORIAL

WORLD NEWS:  
EGYPT



# Find Us on Facebook



coalenergyonline



<https://www.facebook.com/coalenergyonline>



8

2014 Miner's Memorial



In the Press **20**

# table of contents

## Features:

08 2014 Miner's Memorial

## Departments:

24 World News: EGYPT

## In every issue:

03 Letter from your Publisher  
04 Association Comparisons  
27 Association Members  
20 In the Press  
34 Industry Events  
36 Index to Advertisers  
36 Upcoming Issue

## Published & Produced By:

Martonick Publications, Inc.

PO Box 244322  
Boynton Beach, FL 33424

Toll Free Phone: (866) 387-0967  
Toll Free Fax: (866) 458-6557

info@martonickpublications.com  
www.martonickpublications.com  
www.coalenergyonline.com

The opinions expressed by the authors of the articles contained in Coal Energy are those of the respective authors, and do not necessarily represent the opinion of the publisher.

### President:

Maria Martonick

### Vice President:

Steve Martonick

### Managing Editor:

A.J. Raleigh

### Contributing Writers:

Maria Martonick, Joseph Main,  
Polina Devitt, Alessandra Prentice,  
Hugh Lawson, Jodie Louise Nouman

### Graphic Designer:

Natalia Filatkina

**Railcar Repair**



**Wheelset Services**



**Tank Car Repair**



**Bearings**



**PROGRESS**  
RAIL SERVICES

**Wheels**



**Locomotive Parts & Repair**



**Railcar Parts**

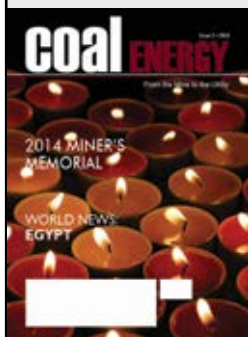


Our integrated products and services, combined with our strategically located facilities, set us apart in the industry. Call us today and put the power of Progress to work for you.

800-476-8769

[www.progressrail.com](http://www.progressrail.com)

# letter from THE PUBLISHER



AUGUST 2015

Dear readers ,

It is with sadness that we publish the 2014 miners memorial in this issue of Coal Energy. In lieu of my message I would like to publish the following poem dedicated to each of these miners and their families.

## *The Passing of a Loved One*

*Although were word cannot express,  
The depth of loss we feel,  
It sometimes helps to read a verse,  
To aid the heart to heal.*

*We want to hold on and not let go,  
The pain seems far too great.  
Every fibre they mean to us,  
We want to store and crate.*

*But life goes on with unwanted change,  
To adapt and forge ahead.  
Live the now with those still here,  
Together the grief will shed.*

*Let fond memories that you have,  
Heal with their warm glow,  
The sorrow in your laden heart,  
With time will surely go.*

*Our life on Earth is but a moment,  
In God's eternal plan.  
The heavenly wonders that awaits our soul,  
Is beyond the mortal man.*

*And when its time for us to pass,  
Reunions are in stall,  
All of those that have gone before,  
We'll meet in heaven's hall.*

*But till that time, be strong and sure,  
And experience all you can.  
Have zest for life and make it full,  
Its pat of God's grand plan.*

By Bill Hoeneveld 13 Jan 2009

Thank you to our sponsors for making this issue possible .  
Warm regards,

*Clara Hartwick*



# ASSOCIATION COMPARISONS



## AMERICAN COAL ASH ASSOCIATION

### **Mission:**

The ACAA advances the management and use of coal combustion products in ways that are environmentally responsible, technically sound, commercially competitive and more supportive of a sustainable global community.

[www.acaa-usa.org](http://www.acaa-usa.org)

## THE NATIONAL MINING ASSOCIATION

### **Mission:**

NMA's mission is to build support for public policies that will help Americans fully and responsibly benefit from our abundant domestic coal and mineral resources. Our objective is to engage in and influence the public process on the most significant and timely issues that impact mining's ability to safely and sustainably locate, permit, mine, transport and utilize the nation's vast resources.

### **NMA serves its membership by:**

- Promoting the safe production and use of coal and mineral resources
- Establishing a strong political presence in the Nation's Capital
- Serving as the information center for and a single voice of U.S. mining
- Addressing the current and future policy needs of U.S. mining, mining equipment manufacturers and support services members of NMA

[www.nma.org](http://www.nma.org)

## NATIONAL COAL TRANSPORTATION ASSOCIATION

### **Mission:**

The Mission of the NCTA is to provide education and facilitation for the resolution of coal transportation issues in order to serve the needs of the general public, industry, and all modes of transportation.

This is accomplished through the sponsoring of educational forums and providing opportunities for the lawful exchange of ideas and knowledge with all elements of the coal transportation infrastructure.

[www.nationalcoaltransportation.org](http://www.nationalcoaltransportation.org)

## AMERICAN SOCIETY OF MINING AND RECLAMATION

### **Mission:**

ASMR, American Society of Mining and Reclamation, was established in 1983 to serve the mining and reclamation community as an outlet for scientific research and demonstration papers through annual National meetings. These reclamation projects include activities associated with all kinds of drastically disturbed lands.

<http://fp1.ca.uky.edu/asmr/>

## AMERICAN COAL COUNCIL

### **Mission:**

The American Coal Council (ACC) is dedicated to advancing the development and utilization of coal as an economic, abundant/secure and environmentally sound energy fuel source.

The Association promotes the lawful exchange of ideas and information regarding the coal industry. It serves as an essential resource for companies that mine, sell, trade, transport or consume coal. The ACC provides educational programs, advocacy support, peer-to-peer networking forums and market intelligence that allow members to advance their marketing and management capabilities.

[www.americancoalcouncil.org](http://www.americancoalcouncil.org)

## WORLD COAL ASSOCIATION

### **Mission:**

The World Coal Association is a global industry association comprising the major international coal producers and stakeholders. WCA works to demonstrate and gain acceptance for the fundamental role coal plays in achieving a sustainable and lower carbon energy future. Membership is open to companies and not-for-profit organizations with a stake in the future of coal from anywhere in the world, with member companies represented at Chief Executive level. WCA is the global network for the coal industry.

<http://www.worldcoal.org/about-wca/>

## RMEL

### **Mission:**

It is RMEL's mission to provide a forum for education and the sharing of ideas to better serve the electric energy industry and its customers.

[www.rmел.org](http://www.rmел.org)

## COAL TRADING ASSOCIATION

### **Mission:**

The Coal Trading Association (CTA) is the only trade association dedicated exclusively to the needs of traders, trading managers, brokers, risk managers, sales managers, and purchasing managers in the coal trading industry.

CTA was established in 1999 to promote coal trading capability and liquidity in the US. CTA develops and maintains industry standards for coal trading activity with the goal of achieving a disciplined, liquid and efficient coal trading industry. To achieve this goal, CTA develops policies, exchanges information among members and other interested professional and technical groups, and offers training programs to improve the knowledge, skills, and practice tools of its members.

[www.coaltrade.org](http://www.coaltrade.org)

# The best coal cars come from FreightCar America.

FreightCar America is the world's leading coal car builder for good reason. Its BethGon® II gondola car and AutoFlood III™ automatic discharge hopper car are the standards of the industry.

No one builds more aluminum, steel, and stainless steel coal cars than FreightCar America. That should come as no surprise - FreightCar America and its predecessor companies have been at it for 105 years!

In addition to coal cars, FreightCar America builds flat cars, mill gondolas, intermodal cars, coil steel cars, covered hopper cars and AVC Aluminum Vehicle Carriers.

Contact your friends at FreightCar America to find out more about the best freight cars, produced by America's most innovative railcar builder.



**FreightCar  
America**

*We are America's freight car builder.*

Two North Riverside Plaza  
Suite 1250  
Chicago, IL 60606

800-458-2235

[www.freightcaramerica.com](http://www.freightcaramerica.com)

Airport Runways  
Housing Subdivisions  
Interstate Highways  
State Highways  
County Roads  
State Parks  
Parking Lots  
Feedlot Pads  
Pond & Lake Floors



Leading The Industry In Soil Stabilization  
& Quick Setting Flowable Fill



20011 Cty Rd 13  
PO Box 1449  
Fort Morgan, CO 80701  
970.867-4401  
[www.flashfill.net](http://www.flashfill.net)  
[www.son-haul.com](http://www.son-haul.com)

Asphalt Pulverization • Cement • Class C Fly Ash •  
Full Depth Reclamation • Lime • Flash Fill

SONFILL LLC



***“Mining With Purpose”***

(618)-643-5500

McLeansboro, IL 62859

[www.whiteoakresources.com](http://www.whiteoakresources.com)

# 2014 COAL MINER'S MEMORIAL



*Thank you to our sponsors  
for your generous support in  
honoring these miners*



***DANIEL  
LAMBKA***

***20, January 16th 2014,  
Alliance Resource  
Partners, LP***

*Daniel Keith Lambka, 20, of Kitzmiller died on Thursday, January 16, 2014. Born on May 1, 1993 in Cumberland, he was the son of Keith L. and Rita M. (Callis) Lambka of Kitzmiller. He was a 2011 graduate of Southern High School. Daniel worked for Mettiki Coal Mt. View Mine in Davis, WV where he died as the result of a tragic accident.*

*He enjoyed coon and deer hunting and loved riding his dirt bike in the mud. He attended the Kitzmiller Assembly of God. In addition to his parents, he is survived by a sister, Sarah Lambka of Kitzmiller; his girlfriend, Keri Kuh of Scherr, WV; a special cousin, Scotty Lambka; his paternal grandmother, Pauline Lambka of Elk Garden; his maternal grandfather, James Callis and wife Mary of Jane Lew, WV; several aunts and uncles including special uncles Bill Lambka, Stanley Lambka, Mark Lambka and Robert Callis; and many, many friends including special friends, Rory Kuh, II, Terry Kuh and Austin Berg.*

*He was preceded in death by his paternal grandfather, William G. Lambka; maternal grandmother, Helen Callis; and a special aunt, Bonnie Harsh.*

***ARTHUR D GELENTSER III***

***24, February 21st 2014, SunCoke Energy Inc  
(Dominion Coal Corporation)***



***ERIC D. LEGG,***

***48, May 12th  
2014, Patriot Coal  
Corporation***

*Eric DeWayne Legg 48 of Twilight, WV died May 12, 2014, due to a tragic mining accident.*

*He was preceded in death by his grandparents; Sybil McClure and Shell Legg, Hazel Hoosier and Carl Elswick and his mother; Janice Kay Legg.*

*Eric is survived by his father; Robert (Bobby Jo) and Vonna Legg, his brother; Timothy Ray Legg, sister; Kacie Jo Legg Atha, his fiancé Denise Williamson, his children; Jesika Ann Legg, Jacob Tyler Legg, and Morgan Denise Legg, stepchildren; Hannah Beth Johnson and Colton Scott Vint, grandchild; Boston Reese Legg, nephews Colton Legg and Avery Atha, great niece; Rylea Katherine Legg, friend Rodger Stover and several other close friends.*

*Eric was a hard working man, who loved his family, hunting, and being outdoors. He will be remembered and missed by many.*

***JOSHUA L  
WISHARD***

***25, June 4th 2014,  
Peabody Energy***



*Joshua Lee Wishard, 25, of Spearfish, formerly of Pierre, died Wednesday, June 4, at the Peabody Mine Company, Wright, WY. Joshua was born December 27, 1988, in Pierre, SD, where he lived having graduated from TF Riggs High School in 2007 before settling in Spearfish.*

*Josh had a passion for family, friends and Disc Golf - where he dedicated a portion of his time raising alcohol awareness through a local Disc Golf tournament in honor of his late brother, Cameron Dean Wishard. The tournament was organized by Josh as a way to bring friends and family together to commemorate Cameron's life, as well as to raise awareness about the dangers of drinking and driving. Josh had a passion for giving back and promoting the positive message.*

## **WILLIAM-DANIEL H PAYNE**

*25, May 14th 2014, Coalfield  
Transport Inc.*



*William-Daniel Hans Payne, 25, of Johnston City passed away at 3:20 p.m. on Wednesday, May 14, 2014 at M-Class Mining in Thompsonville. Daniel was born on July 14, 1988 in Carbondale, the son of Brian and Sharon (Hartung) Payne. He married Terra (Harriss) on June 4, 2011 in DeSoto. She survives. Daniel was a coal miner at M-Class Mining. He graduated Johnston City High School in 2007 where he participated in football, wrestling, and baseball. He was a member of the National Honor Society. He was an avid motorcycle rider and raced go carts and dirt track race cars. He was a member of the Buccaneer's Club of Johnston City. He loved to hunt, fish and to be with family and friends. He also loved spending time with his pets Maggie, Willie, and Jack.*



## **GARY P HENSLEY**

*46, May 12th 2014,  
Patriot Coal Corporation*

*Gary Paul Hensley, 46, of Chapmanville, departed this life Mon., May 12, 2014, at Brody Mining Company. Born March 20, 1968 in Man, he was a son of Luther and*

*Verlie Ruth Hensley of Chapmanville.*

*Preceding him in death were his grandparents, Noah and Erma Hensley and William and Ella Jane Purkey; one sister, Linda Purkey Atwood; two brothers, Luther Hensley Jr., and Ricky William Hensley; one nephew, Jody Paul Lambert; one brother-in-law, Dana "Boodle" Noe, and his father and mother-in-law, Rev. Thomas A. and Imogene Jones.*

*Gary enjoyed hunting and fishing.*

*In addition to his parents, those left to cherish his memory include his wife, Angela Hensley; three daughters, Kerrigan, Kaley and Kyra Hensley, all of Chapmanville; one son, Gary Caleb Hensley of Huntington; four sisters, Brenda (Clyde) Adkins, Alice (Con) Barker, Donna Kay Noe and Tenna (Eddie) Toney, all of Chapmanville, and three brothers, Phillip (Penny) Hensley of Hedgeville, and Michael Hensley and Steve Hensley, both of Chapmanville.*



***ELI  
ELDRIDGE***

***34, December 16th,  
2014, Patriot Coal  
Company***

*Eli Eldridge, age 34, of Sturgis, KY, formerly of Vicco, KY, passed away Tuesday, December 16, 2014 of injuries sustained in a mining accident at Waverly, KY. He was born in Hazard, KY on July 22, 1980 to Boone Eldridge and the late Barbrie Jean Couch Eldridge.*

*He is survived by his Wife: Lisa Eldridge; Children: Heather Leighanne Sumner and Joshua*

*Daniel Jent; Father: Boone Eldridge; Brothers: Eric Eldridge, David Baker, Lee Baker and Gregory Couch; Sisters: Debra Eldridge, Monessia Arnett and Donna Sue Morgan.*

*He was preceded in death by his Mother: Barbrie Jean Eldridge.*

***TIMOTHY W MEMMER***

***41, March 25th 2014, Alliance  
Resource Partners, LP***



*Timothy Wayne Memmer, 41, passed away Tuesday, March 25, 2014 as a result of an accident at Gibson County Coal rural Princeton, Ind. He was born Sept. 20, 1972 in Princeton to James D. and Loretta (Brown) Memmer.*

*He was a coal miner at Gibson County Coal and was a Union Millwright. He received an Associate Degree in Applied Sciences from Ivy Tech and completed 4 years internship with the Millwrights and was a member of Millwright Union Local 1076. He loved to ride his Harley whenever he could.*

*He is survived by his parents, James D. and Loretta Memmer of Princeton; 1 son Jacob Memmer of Vincennes; 2 brothers Mike (Pam) Memmer and Robert Memmer both of Princeton; several nieces and nephews.*

*He was preceded in death by maternal grandmother, Norma Brown Miskell and paternal grandmother, Frieda A. Memmer.*

## **MICHAEL J JUSTICE**

**41, August 20th 2014, CONSOL  
Energy, Inc**



Mr. Michael Junior "Bubby" Justice, age 41, of the Horn Branch section of Garden Creek, Virginia, passed away Wednesday (August 20, 2014) from injuries sustained in a mining accident. Born June 26, 1973 in Tazewell County, Virginia, he was a son of Michael Justice of Garden Creek, Virginia, and the late Claudine Carol Vandyke Justice. A loving husband, father, grandfather, son, and brother, he was a member of Osborne Mountain Pentecostal Holiness Church. He had been employed as a coal miner since 1995, working for Consol Energy for the past four years. He was an active fisherman and hunter, and enjoyed working on automobiles of all kinds. Bubby had a heart of gold and a smile like no other.

In addition to his mother, he was preceded in death by his grandmother, Grace Justice Price, and grandfathers, James Justice and Earl Vandyke.

In addition to his father, survivors include his wife of seventeen years, Tammy Denise Nickels Justice of the home; one son, Jordan Lee Justice; four daughters, Amber Denise Justice and Lyndzey Sutherland both of the home, Courtney Tayler Justice Miller and husband, Chance of Roanoke, Anita Davis of Richlands; very special granddaughter who was so close to his heart, Sadie Ryan Miller; granddaughters, Heather Cheyanne Davis, Alexis Sutherland, and Kelsie Elswick; grandson, Dakota Sutherland; two sisters, Melissa Justice Street and Sarah Nadine Justice both of Oakwood; brother, Jonathan Justice of Oakwood; step-mother, Phyllis Justice of Garden Creek; father-in-law and mother-in-law, Arnie and Loretta Nickels of Grundy; brothers-in-law, Travis Nickels and wife, Jolene and family of Oakwood, Tim Nickels and wife, Tammy of Little Prater, and Thomas Nickels of Tennessee; sisters-in-law, Teresa Nickels Lester and husband, Shannon of Looney's Creek, Tina Nickels McGlothlin and husband, Anthony of Garden Creek; grandmother, Waddie Vandyke of Oakwood; several nieces and nephews also survive.

## **BARRY N DUNCAN**

**53, September 15th 2014, Black Warrior Minerals, Inc**

Mr. Duncan was preceded in death by his Grandparents-Hubert and Virgie Lee Duncan, Curtis and Ada Miller.

He is survived by his Wife-Tracey Duncan; Mother-June Duncan; Father-Hurple Duncan; Father-in-law and Mother-in-law-Freddy and Judy West; Son-James Vander Duncan; Sister-in-law-Jami Wilson; Brother-Jonathan Duncan (special friend Kim Rice); Nieces-Erica Duncan and Grace Wilson.



## **ALEJANDRO RAMIREZ**

***46, September 16th 2014,  
Robert E Murray, West Ridge  
Mine***

*Loving husband, father, grandfather and friend, Alejandro Ramirez, age 46, passed away unexpectedly in a coal mining accident on September 16, 2014.*

*He was born April 25, 1968 in Sinaloa, Mexico.*

*Married Alejandra Valdez, August 2005 in Huntington, Utah.*

*Alejandro loved spending time with his family especially his grandchildren. He enjoyed raising goats and working on his cars. He*

*loved helping those in need and would never say no to lending a helping hand. Alejandro was well liked and respected by his co-workers at the West Ridge Coal Mine for his excellent work ethic. He will be dearly missed by all who knew and loved him.*

*Survived by his loving wife, Alejandra, Price; children, Yan Carlos (Brittnie) Arroyo, Siklalic (Humberto) Garcia, both of Price, Iliana Sebreros, Salt Lake City, Francisco (Ruby) Sebreros, Fred Sebreros, both of Price; grandchildren, Madison and Kruz Arroyo, Viririana, Arianna and Lilianna Miranda; Alejandra Sebreros.*

## **TOMMYE REYNOLDS**

***58, April 18th 2014, Law River Company LLC***

*Tommy Eugene Reynolds, 58, of Montgomery died April 18, 2014. He was born April 29, 1955 in Montgomery and was the son of the late Loris and Janie Hutchins Reynolds.*

*He was retired maintenance supervisor from West Virginia Institute of Technology and was a security guard for Allied Barton in Crown Hill for 25 years.*

*Survivors include his wife Shane Anne Reynolds; daughter, Lori Reynolds of South Charleston and a son, Scott Reynolds of Charleston; sisters, Cathy Preast of Swiss and Jane Reynolds of Montgomery Heights; brother, Michael Reynolds of Powellton; grandchildren, Lucas Marker and Karleigh Elkins.*

## ***DARWIN REIMER***

***51, October 19th 2014,  
Peabody Energy***



*Darwin L. Reimer, 51, Gillette, WY, died Saturday, October 18, 2014 while working near Wright, WY.*

*Darwin was born August 20, 1963, in Huron, SD, to William and Verna Mae (Thompson) Reimer. He graduated from Huron High School and attended the auto body repair program at Western Dakota Vo-Tech.*

*On May 9, 1988 he married Brenda Reder. The couple moved to Colorado where Darwin managed an auto body shop for Macco in Ft. Collins. They lived in Colorado for five years until moving to Sheridan, WY, where he managed the body shop at a Buick dealership. They moved to Gillette where he worked for Energy Dodge. In 1998 He worked for Caterpillar for two years. At the time of his death he was a haul truck operator for North Antelope Rochelle Mine near Wright, WY.*

*Darwin was a huge sports fan. He enjoyed watching his boys play baseball and basketball. He also enjoyed working in his yard.*



## ***RAYMOND S SAVAGE***

***49, November 10th 2014, Red  
Bone Mining Company***

*Raymond Scott Savage, age 49, of Westover, went to be with the Lord on Monday, November 10, 2014. Raymond was born in Morgantown on February 7, 1965, a son of Ruth Feathers Savage of Morgantown and the late Raymond Savage, Jr.*

*Raymond worked as a coal miner for Red Bone Coal Company and was an active member at New Beginnings*

*Community Church. He loved golfing, coaching youth athletics, and was an avid WVU fan. He was a wonderful husband, father, and son, who will be deeply missed.*

*In addition to his mother, Raymond is survived by his loving wife, Dorothea "DD" McCord Savage; daughter, Tamara Savage of Westover; son, Raymond Scott Savage, Jr. of Winchester, VA; sister, Rose Marie Walker and husband Steve of Everettville; and brothers, Delmar Savage and wife JoAnn of Leesburg, FL, Dennis Savage and wife Amy of Colerain, OH, and Steven Feathers of Cassville; his paternal grandmother, Rose Savage of Laurel Point; mother-in-law, Carolyn McCord; several nieces and nephews; and a special friend, Joe Skavinsky.*



## **STEWART R ORCUTT**

**58, June 23rd 2014,  
Cloud Peak Energy  
Resources LLC**

Stewart Randal (Randy) Orcutt, 58, of Sheridan, passed away suddenly on Monday, June 23, 2014, from an accident. Stewart was born March 4, 1956 in Watford City, ND, to parents John Wayne and Bernice Faye (Stewart) Orcutt. He was the fifth child of eleven. His father worked in the oil fields of Montana and North Dakota which required the family to move often during the first years of Randy's life, moving from Belfield, Tioga, Bowman ND, then to Baker, Montana and finally settling in Glendive, MT. in 1958. When Randy was 8 years old his parents bought a home on 14 acres along the Yellowstone River with plenty of woods to roam in, a river to swim and float in, along with ample space to raise a much needed gigantic garden. It was here that he developed his unbelievable work ethic that continued throughout his entire life. With no fear of hard work he was part of the family crew that worked in the forests thinning and slashing in the Gallatin and Kootenai National Forests during the summer breaks of his high school years. Those summers brought many harrowing experiences, but also offered precious memories sitting around a campfire sharing stories and songs with the family after a long day's work. He graduated from Dawson County High School, in Glendive, MT in 1974 and at 19 years old served a two year mission (March 1975 – April 1977) to the Taiwan-Taipei Mission for the Church of Jesus Christ of Latter-day Saints, where he learned to speak and write Mandarin Chinese, and to love the Chinese people who almost came up to his tall shoulders. Stewart began driving semi-trucks in the 1980's, and drove for UPS, Cross Petroleum Service, and Prince Trucking (18 yrs.), before going to work for the last six years at Spring Creek Coal Mine. He loved driving the 230 ton heavy hauler. Stewart was always known as a passionate, exuberant man who touched the lives of almost everyone he came in contact with. He is known for his random acts of kindness and generosity. His dynamic work ethic was the force that held him steady during 31 years of driving big rigs, some years working 17-18 hours a day, often 7 days a week. Stewart loved reading the scriptures, studying and discussing gospel doctrines, and going to the Billings Temple almost monthly. In June 2001 he married his love, Karen (Barnes) Guillen, who became his eternal companion on March 27, 2004 when they were sealed for time and all eternity at the Billings MT Temple. Between them both they had eight children: Hank (Heather) Guillen, Chad Orcutt, Kullin (Shauna) Orcutt, Tara (Casey) Wallingford, Desiree (Emell) Montgomery, all of Gillette, WY., Troy (Carol) Guillen of Buffalo, WY and Sari (Bob) Fisher of Fort Hood TX, moving soon to Fort Lee, VA; Aubrey Rae Orcutt

(deceased). Stewart is survived by his beloved wife, Karen, and seven of their eight children, along with eighteen (soon to be nineteen) grandchildren: Trystan, Karleigh, and Gavin Guillen; Shell, Mia, Paige, Tenae, and Kyra Fisher; Haille and Kale Guillen, Kaylee, Kahlon, Jacob Orcutt, Austin Wallingford, Shaunte and Emell Jr. Montgomery, and Aubrey's children Jacob, Kaya, Kiernan Lantta (Orcutt). He is also survived by nine siblings: Rhonda (Roy) Ogden of Mandan, ND; Linda (Tiloi) Tuitama of Oxnard, CA; Terry (James) Steffen of Savage, MT; John Orcutt, Kurt (Tulli) Orcutt, Tracy (Carmen) Orcutt, D'Ann (Joey) Kessel all of Glendive, MT. Also, Kelly (Brenda) Orcutt of Cheyenne, WY and Glendive, MT, Jason (Stacee) Orcutt of Cheyenne, WY. He is also survived by 55 nieces and nephews who cherish their uncle and miss him already. He is also survived by many great nieces and nephews. He was preceded in death by his parents, his sister Tawnya R. Orcutt, and his daughter, Aubrey. Stewart has fought the good fight, and has met the trials of life with faith and steady perseverance. His goal for all of us would be to draw closer to our Savior, Jesus Christ to press forward with faith and to stand strong and be true.

## **JUSTIN MIZE**

**31, October 7th 2014, Cox Enterprises, LLC**

Justin Michael Mize age 31 of Harrogate, TN was born March 7, 1983 and passed away October 7, 2014 due to a mining accident. As a child, he attended Binghamtown Baptist Church, then later went to Old Yellow Creek Baptist Church and Little Creek Baptist Church. He loved all things outdoors, hunting, fishing and 4-wheeling. He was preceded in death by his great grandfather and great grandmother, Sewell and Ressie Hill Crockett, great grandparents Lonnie and Reva Fultz and Sister Kara Mize.

He is survived by his Father & Mother: Mike & Karen Mize of Harrogate, TN

Wife: Jessica Mize of Harrogate, TN

Children: Blake, Kelsey and Aubrey

Brother & Sister-in-law: Jeremy & MiKaela Mize of Harrogate, TN

Nephews: Jeron & Jaxon

Grandparents: Ronald & Helen Mize

Doris Fultz

Glen Fultz

Aunts & Uncles: Connie & Bobbie Cox

Dale Wayne & Amy Mize

Teresa Rasmussen

And a host of other relatives and friends.



## **UTTER CONSTRUCTION, INC.**

**Safely Supporting Power Generation**

**Ash Pond Closures**

**Landfill Construction & Development**

**Waste Pond Dredging & Maintenance**

**Landfill Operations & Maintenance**

**Material Processing & Dewatering  
Techniques**

**Environmental Maintenance**

**Material Handling & Transportation**

**Civil Site Development & Earthwork**

**Commercial Scaffolding & Carpentry**

**Miscellaneous Concrete Services**

**Pipe System Installations**



1302 State Route 133  
Bethel, Ohio 45106

Office: (513) 876-2246  
Fax: (513) 876-3626

[www.utterconstruction.net](http://www.utterconstruction.net)



**FlyAshDirect**



*The NEXT GENERATION.....  
.....in FLY ASH BENEFECIATION*

## **CARBON BLOCKER™**

- ✓ **PROVEN** and **PATENTED** Technology approved for use by many **State DOT** agencies
- ✓ **EXTENSIVE** field experience since 2005
- ✓ **HIGHLY EFFECTIVE** on **POWDERED ACTIVATED CARBON**
- ✓ Minimal **CAPITAL** costs and no plant interruption

*Contact FlyAshDirect's **Concrete Research Laboratory** to schedule a **FREE** comprehensive analysis of your ash. The proof is in the results.*

**FlyAshDirect**  
866-871-9733  
[www.flyashdirect.com](http://www.flyashdirect.com)

In partnership with:  
 **BASF**  
The Chemical Company

# PRESS RELEASES

## Martin Engineering Becomes Sole Distributor Of CleanScape Conveyor Belt Cleaners / June 5th, 2015

[Walluf, Germany] -- A worldwide leader in belt conveyor technology has become the sole distributor of the acclaimed CleanScape Cleaner, as Martin Engineering GmbH takes exclusive responsibility for sales in all of Europe as well as in Russia, North Africa and the Middle East. The innovative belt cleaning system received the Australian Bulk Handling Award in the "Innovative Technology" category in 2013 for its design and potential benefits, which include low belt wear, extended service life, reduced maintenance and improved safety, ultimately delivering lower cost of ownership. It has been proving itself in a wide range of applications,

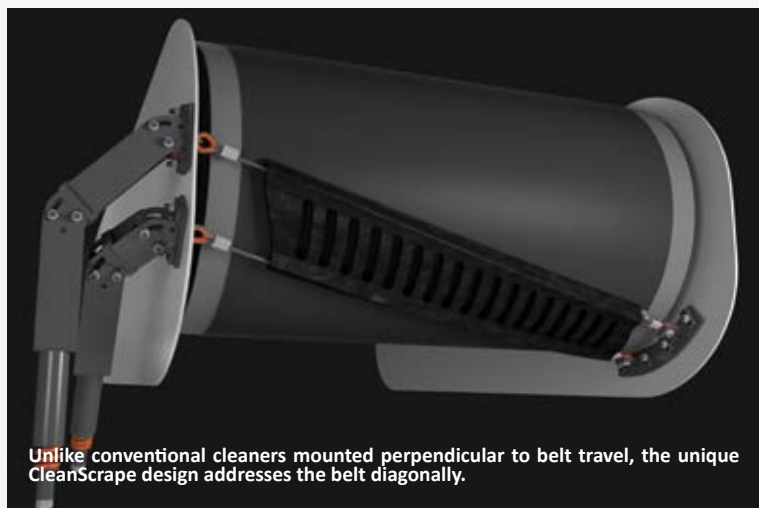
such as mining, coal handling, quarrying, cement, scrap and other material bulk handling operations.

Unlike conventional belt cleaners that are mounted at a 90 degree angle to the belt, the CleanScape Cleaner is installed diagonally across the discharge pulley, forming a three-dimensional curve beneath the discharge area that conforms to the pulley's shape. The unique design incorporates a matrix of tungsten carbide scrapers and is tensioned lightly against the belt to prevent damage to the belt or splices. Despite extremely low contact pressure between belt and cleaner, it has been shown to remove as much as 95% of potential carryback

material. The novel approach has been so effective that in many operations, previously crucial secondary belt cleaners have become unnecessary, saving further on belt cleaning costs and maintenance time.

The CleanScape Cleaner protects the belt with its specific application of low force and is ideally suited for both slow and fast conveyor belts, including those with mechanical splices. With its compact size, the design is an excellent solution for areas with restricted space. It can be located either inside or outside of the transfer chute, and the straightforward installation typically requires less than two hours.

CleanScape Cleaners are generally sold in three sizes: S, M, and L, which cover drum diameters from 270mm to 1250mm (10.6" to 49.2") and belt widths from 300 mm to 2800 mm (11.8" to 110.2"). Each size is available in four different carbide metal grades to suit specific materials and belt structures, one of which is a carbide formulation developed for use on mechanically spliced belts. The supporting components of the assembly can be specified in regular steel or in stainless for specialized applications.



Unlike conventional cleaners mounted perpendicular to belt travel, the unique CleanScape design addresses the belt diagonally.

All of the CleanScape Cleaner designs are certified by ATEX and can be used in underground mining. In addition to the pre-assembled belt cleaners that are ready for installation, the units can also be supplied in coiled lengths of 12.4 meters (40.68 feet), allowing users to cut to length as needed. Necessary equipment and accessories, such as chains or steel cables, can also be obtained from Martin Engineering by the meter.

“Both companies saw the value in collaboration, partly because of the technology, but also because of the similar company cultures,” said Michael Hengl, Managing Director for Martin Engineering Europe. “Our business models are based on comparable values, innovative solutions and quick internal decision-making. The CleanScape Cleaner represents an entirely new



**CleanScape forms a three-dimensional curve beneath the discharge area that conforms to the pulley's shape.**

dimension in belt cleaning, and we're so confident in its performance that we provide a money-back satisfaction guarantee.”

CleanScape GmbH was founded in 2014 to supply

and further develop conveyor belt cleaning technology. The business emerged from the company IBS Industriemaschinen-Bergbau-Service GmbH, which has been active for more than 30 years in mining, tunnel



## FIRST UNION RAIL

A Wells Fargo Company

### The right equipment. The right lease. The right people.

Taking your coal to market efficiently and reliably requires the right equipment. First Union Rail has just what you need: superior railcars and experienced professionals who can offer leasing terms and structures that make sense for your company. Let us help move your business forward with:

- Railcar operating/capital leases
- High-quality, diverse fleet
- Fleet management services

**Ready to learn more? Call today at 847-318-7575**

**[Firstunionrail.com](http://Firstunionrail.com)**

© 2012 Wells Fargo & Company. All rights reserved. First Union Rail Corp. is associated with Wells Fargo & Company, a company that is not regulated in Canada as a financial institution, a bank holding company or an insurance company. MC-4383

construction and conveyor technology. IBS and CleanScrape are a part of Schmittgruppe, a fourth-generation, family-run business with headquarters in the northern Bavarian town of Bischofsheim an der Rhön.

The group operates as a supplier for the automotive, aviation and power generation industries, mining and tunnel construction, the bulk materials industry and other sectors. With around 220 employees, the business group has a branch in Poland, as well as partnerships with distribution companies and service firms worldwide. The company is certified according to DIN EN ISO 9001:2008. Further information can be found at: [www.schmittgruppe.com](http://www.schmittgruppe.com).

Martin Engineering was founded in 1944, and has grown to become a world leader in making bulk materials handling cleaner, safer and more productive. The company supplies conveyor products and material flow aids around the world for a wide variety of bulk material applications, including mining and coal handling, quarrying, cement, rock / aggregate, biomass, grain and other materials. The firm is headquartered in Neponset, IL (USA), offering manufacturing, sales and service from factory-owned business units in Brazil, China, France, Germany,

Indonesia, Mexico, South Africa, Turkey, India and the UK, and under exclusive license with ESS Australia. The European Headquarters was founded in 1987 as Martin Engineering GmbH and is based in Walluf, Germany, near Wiesbaden. For more information, visit [www.martin-eng.com](http://www.martin-eng.com), [www.martin-eng.de](http://www.martin-eng.de) or call (309) 852-2384. Global representatives for Martin Engineering can be found at [www.martin-eng.com/rep-finder](http://www.martin-eng.com/rep-finder).

© 2015 Martin Engineering Company. All rights reserved. Martin Engineering products are protected by U.S. Patents, corresponding foreign patents and patents pending. Additional information can be obtained at [www.martin-eng.com/trademarks](http://www.martin-eng.com/trademarks).

#### FOR MORE INFORMATION

##### For product information:

Joachim Preiß  
Marketing Manager Europe

Tel.: +49 (0) 6123 / 97 82 21  
Fax: +49 (0) 6123 / 755 33  
Email: [Joachim.preiss@martin-eng.de](mailto:Joachim.preiss@martin-eng.de)  
Website: [www.martin-eng.de](http://www.martin-eng.de)

##### For editorial assistance:

Rick Felde / (541) 306-4815  
[rickf@martin-eng.com](mailto:rickf@martin-eng.com)



**Delivering  
Tough, Tested, &  
Innovative  
material handling  
solutions**

*backed by genuine and dependable  
industry experience since 1944.*

 visit [martin-eng.com](http://martin-eng.com)  
call 800.544.2947  
email [info@martin-eng.com](mailto:info@martin-eng.com)

A Global Company



© 2015 Martin Engineering Company. Additional information can be obtained at [www.martin-eng.com/trademarks](http://www.martin-eng.com/trademarks).

## COAL STORAGE



(Lake Charles, Louisiana)

Borton can help the customer design, plan, and build their coal storage facility. Our experienced engineers can assist with the crucial designing stage. Our experience allows us to utilize the latest technological advancements.

Renovation of existing facilities can improve efficiency and meet the customer's ever-changing requirements.



Building silos, conveyors, and controls for handling coal is an area of expertise for Borton.



(Converse County, Wyoming)



(Loudon, Tennessee)

Whether the customer's project includes loading out by train, truck, or ship, Borton will incorporate the latest technology in automation, scales, and conveying.

Borton, L.C. • 200 E. First St. • Hutchinson, KS 67501 • Voice (620) 669-8211 • Fax (620) 662-3225 • [borton@borton.biz](mailto:borton@borton.biz)

## Specialized Utility Plant Services



- Coal & Ash Handling Solutions
- Coal & Ash Transportation
- Water Filtration & Processing
- Bulk Transportation of All Materials
- Ash & Waste Management
- Resource Recovery & Marketing
- High Powered Wet & Dry Vacuuming
- Excavation for Ponds & Landfills



7440 I-25 Frontage Rd (East Side), Frederick, CO 80530  
(303) 772-4577 • Metro (303) 442-6829 • Fax (303) 442-5706

## FINE COAL SIZING FROM 6.2MM TO 45 MICRONS



### Coal Processing Benefits:

- Removal of high ash fraction from clean coal spiral product or 6" hydrocyclone underflow
- Ash and moisture content reduction in final product
- Minimal operator involvement
- Polyweb™ screens exceeding 12 months
- Patented technology



Five-Deck Stack Sizer



STAND  
431

Coal Prep  
International  
2013

[www.Derrick.com](http://www.Derrick.com)

# EGYPT TO RELY ON COAL FOR 25-30% OF ENERGY

By: Mada Masr

## World News: EGYPT



In an ideal scenario, Egypt would rely on coal to meet 25 percent of its energy needs by 2030, an energy official said. That figure could rise to “not less than 30 percent” if the country fails to meet its renewable energy target.

Relying on coal for 30 percent of Egypt’s energy needs would put it in line with current figures for energy use around the globe, said Maher Aziz Bedrous, a board member of the Middle Delta Electricity company. This will mark a major change for Egypt, which currently relies on oil and natural gas for 96 percent of its energy.

Egypt’s Cabinet agreed in April 2014 to allow coal to be imported for use in electricity generation and cement publication. The government now anticipates that coal imports will reach 30 million tons per year.

Executive regulations governing how coal can be transported, stored and burned were passed into law earlier this month.

The decision to allow coal imports was hugely controversial, facing opposition from civil society as well as then-Environment Minister Laila Iskandar. In April 2014, shortly before the Cabinet ruled on coal, a study produced by the Egyptian Environmental Affairs Agency (EEAA) strongly recommended against allowing the cement industry to use coal for energy generation, citing negative effects on the economy, public health and the environment.

Since then, officials have changed their tune, a trend exemplified by a government-endorsed conference this week called Egypt Coal, which promoted itself with the tagline “the safety using of coal as an alternative energy and its role in supporting the Egyptian economy.”

The conference's opening speech was given by current environment minister Khaled Fahmy, who described the shift to coal as "an inevitable decision" given Egypt's energy deficit and aspirations for development.

Fahmy and other officials emphasized that Egypt has adopted strict regulations to control how coal is used from the moment it enters Egyptian waters up until the resulting waste is disposed.

Speakers emphasized that Egypt's new rules are in line with European Union standards — although one presenter, Agustin Bonilla of Spanish energy firm García-Munté, did note that as a political union of independent countries, the European Union does not actually have unified standards for the use of the fuel.

Throughout the two-day conference, a range of government officials and experts from the private sector emphasized the need to change coal's image. Industry, government and the media should work together to help the public view as progressive and environmentally sound rather than polluting and backwards, speaker after speaker emphasized.

"There's a perception that [coal plants] are the worst type of plants, but in actual fact when you look at the new technologies, emissions are relatively comparable to gas plants, though not as

efficient," said Mark Silverton, of consultancy firm Mott MacDonald.

"In 1850s, during the industrial revolution, coal was a pollutant. In the 20th century, the technology improved and developed greatly," Bedrous said.

"People who say coal is polluting do not know about the new technologies," said Ahmed Ibrahim, from South Valley Cement Co.

There was much talk about new carbon-capture technologies that allow coal-fired plants "near zero emissions." This enthusiasm was tempered somewhat by Shadia al-Shishiny, a member of the EEAA committee tasked with developing laws to regulate the use of coal in Egypt. "We can't call them zero or close to zero, but amounts will be within the law," she said.

Much of the argument for coal rested on global figures. Even countries like Germany, which enjoys a reputation as an eco-friendly country due to its promotion of renewable energies, is expanding its use of coal, noted Bedrous.

Overall, the use of coal was presented as an economic imperative. Unlike Egypt, countries that are discussing reducing coal use "have the luxury of alternatives," said Ihab Mehawed, Orascom Construction's general manager for Egypt.

COAL COMBUSTION  
PRODUCTS

# Innovation by Lafarge

## Lafarge is your solutions provider for CCP utilization

- > Over fifty years of acquired experience and technical expertise in the ash business
- > One of the largest suppliers, and users of concrete-quality fly ash and other CCPs
- > A leading consumer of fly ash, bottom ash, and gypsum for use in raw feed
- > One of the largest consumers of synthetic gypsum for use in wallboard
- > A leading supplier of CCPs for geotechnical applications

Bottom line: Lafarge is an ideal partner for marketing your CCPs

To learn more, contact your Lafarge representative or visit us at  
[www.lafarge-na.com](http://www.lafarge-na.com)



© 2012 Lafarge North America Inc., Reston, VA

**LAFARGE**  
bringing materials to life™



## Coal Transportation Solutions

America relies on coal, and when it comes to rail transportation for coal, you can rely on TrinityRail. Products such as our rugged rotary gondolas, industry-leading Rapid Discharge® cars and now the revolutionary RDL™, our newest coal car innovation, make TrinityRail your time-tested industry leader. With a complete line of proven and reliable coal car products and services, TrinityRail makes coal transportation effortless. As your single source provider, TrinityRail continues on track to meet your challenges and deliver new ideas.

## Your Single Source

TrinityRail delivers a complete line of innovative railcars and components, comprehensive fleet management and leasing options, and dedicated field service. A fully integrated suite of transportation and logistics services, TrinityRail Asset Management Solutions (T-RAMS®), provides improved fleet utilization, reduced working capital requirements, and more effective administration and management of your rail equipment.

TrinityRail provides a unique perspective and in-depth understanding of rail equipment operations, which helps keep your fleet rolling. With access to a world-class team of transportation experts and a full-range of products and services, TrinityRail can help you increase the return on every component of your investment. Wide-ranging, integrated solutions designed to make rail shipping cost-effective and trouble-free – that's what TrinityRail is all about.

Your Single Source. TrinityRail

**TRINITYRAIL***Built to Deliver®*

2525 Stemmons Freeway, Dallas, Texas 75207  
214.631.4420 Fax 214.589.8623  
[www.trinityrail.com](http://www.trinityrail.com)

## Current National Coal Transportation Association Members

A. Stucki Company	Cleco Corporation	Flagship Rail Services, LLC
AKJ Industries	Cloud Peak Energy	Florida Power & Light Co.
Alliance Coal, LLC	Colorado Springs Utilities	FreightCar America
Alliant Energy	CONSOL Energy, Inc.	GATX Rail
Alltranstek LLC	Consumers Energy Company	GE Rail Services
Alpha Natural Resources	Cooper T. Smith	Global Barrier Coatings
Alpha Products Incorporated	CPS Energy	Global One Transport, Inc
AmerenEnergy Services	Crown Products	Global Coal Sales
American Electric Power	Dairyland Power Cooperative	Grand River Dam Authority
American Railcar Industries, Inc.	David J. Joseph Company	Great River Energy
Amsted Rail	Dayton Power & Light Company	The Greenbrier Companies
Arch Coal Sales Company, Inc.	Detroit Edison	Hall St. Coal Terminal
Arizona Electric Power Coop. Inc.	Drummond Coal Sales Inc.	Helm Financial Corporation
Arizona Public Service Company	Duke Energy	Hendricks River Logistics
Arkansas Electric Cooperative Corp	Dynegy Marketing and Trade	Heyl & Patterson
Appalachian Railcar Services, Inc.	Ecofab Australiasia	Idaho Power Company
Associated Electric Coop., Inc.	Ellcon-National, Inc.	iIRX
Associated Terminals	The Empire District Electric Co.	Jim Walter Resources, Inc.
Basin Electric Power Cooperative	Energy Publishing, Inc.	Kansas City Power & Light
Benetech, Incorporated	Enserco Energy	Company
Bosch Rexroth Corp.	Entergy Services, Inc.	Kiewit Mining Group, Inc.
CANAC, Inc.	Excel Rail Management LLC	Kinder Morgan Terminals, Inc.
CDG Engineers, Architects,	Exelon Generation Company	Koch Carbon, Inc.
Planners	Exponent, Inc.	Lexair, Inc.
CIT Rail Resources	FirstEnergy Corporation	
City Utilities of Springfield	First Union Rail Corporation	

# ***Amsted Rail***

## Current National Coal Transportation Association Members

Locomotive Service, Inc.  
Lower Colorado River Authority  
Luminant

Macquarie Rail, Inc.  
Martin Engineering  
Maxeefish LLC  
MEAG Power  
Metro East Industries  
MidAmerican Energy Co.  
Midland Railway Supply  
Midwest Generation, LLC  
Midwest Industrial Supply, Inc.  
Miner Enterprises Inc.  
Minnesota Power  
Mitsui Rail Capital, LLC  
Momar Incorporated  
Muscatine Power & Water

Nalco Company  
Nebraska Public Power District  
Newmont Mining Corporation  
New York Air Brake  
Northern Indiana Public Service Company  
Norwest Corporation  
NRG Energy, Inc.  
NV Energy

Oglethorpe Power Corp.  
Oklahoma Gas & Electric Co.  
Omaha Public Power District

Ontario Power Generation Inc.  
Otter Tail Power Company

PacifiCorp  
Patriot Coal Corporation  
Peabody COALSALSALES Co.  
Pincock Allen & Holt  
Platte River Power Authority  
Portland General Electric Company  
PPL EnergyPlus, LLC  
Precision Roller Bearing Company  
Progress Rail Services, Inc.

QMASTOR Limited

Rail Link, Inc.  
Railroad Financial Corporation  
RAS Data Services  
RESIDCO  
Rhino Energy, LLC

Salt River Project  
St. James Stevedoring Partners, LLC  
Seminole Electric Cooperative Inc.  
Southern Company Services  
Standard Steel  
Strato Inc.  
Strategic Rail Systems  
Structural Composites of Indiana, Inc.

Taggart Global, LLC

Tampa Electric Company  
Teck Coal Limited  
Tennessee Valley Authority  
Texas Municipal Power Agency  
The Timken Company  
T. Parker Host  
Transportation Services Inc  
TrinityRail  
Tri-State Generation and Transmission Association  
TUCO/NexGen Services  
Tucson Electric Power Company

UtahAmerica Energy

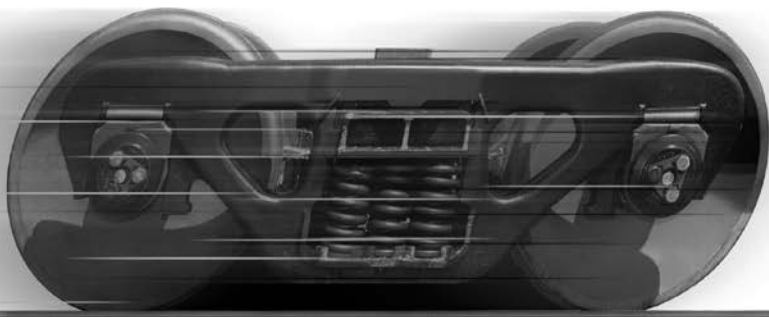
Wabtec Corporation  
We Energies  
Westar Energy, Inc.  
Western Farmers Electric Coop.  
Western Fuels Association, Inc.  
WestRail  
Westmoreland Coal Sales Company  
White Energy Coal North America, Inc.  
Wisconsin Public Service Corp.  
Wood MacKenzie

Xcel Energy  
Xcoal Energy & Resources

Zinkan Enterprises, Inc.

## Below the deck...we're a cut above.

- Truck systems
- Side frames
- Bolsters
- Constant contact side bearings
- Couplers
- Draft sills
- Coil springs
- Center plates
- Draft gears
- Bearing adapters
- Cushioning units
  - End-of-car
  - Center-of-car
- Wheels, curved-plate, heat-treated
- Roller bearings



**Amsted Rail**

200 W. Monroe Street • Chicago, IL 60606 • (312) 853-5680 • [amstedrail.com](http://amstedrail.com)

## Current American Coal Council Members

ADA Environmental Solutions, Inc.	Fuel Tech, Inc.	Oglethorp Power Corp
AEP River Operations	Genscape	Omaha Public Power District
AEP/Cook Coal Terminal	Glencore Ltd.	Patriot Coal Corporation
AKJ Industries	Glenview Capital	Peabody Energy
Alliance Coal, LLC	Golder Associates Inc.	Pevier Coal Sales Co., Inc.
Alliant Energy	Great River Energy	Pincock, Allen & Holt
Alpha Coal Sales Co. LLC	Green River Collieries, LLC	Platte River Power Authority
ALSTOM Power	Hallador Energy Company	Platts
Ameren Energy Fuels & Services Co.	Headwaters Energy Services	Portland General Electric
American Electric Power	Hellerworx, Inc.	PPL EnergyPlus, LLC
Arch Coal, Inc.	Helm Financial Corporation	PricewaterhouseCoopers LLP
Argus Media, Inc.	Holcim (US) Inc.	Progress Energy
Arizona Public Service	ICAP United, Inc.	PSEG Energy Resources & Trading
Armstrong Coal	Ingram Barge Company	Rhino Energy LLC
ASGCO	Integrity Coal Sales Inc.	Richwood
B & W Resources, Inc.	Interlake Steamship Company	River Basin Energy
Benetech, Inc.	James River Coal Co	River Trading Company, LTD
Black & Veatch	James River Coal Sales, Inc.	Roberts & Schaefer Company
BNSF Railway	JM Energy Advisors, LLC	RWE Trading Americas Inc
Boral Material Technologies	JMP Coal Holdings, LLC	Saint Consulting
Buchanan Ingersoll & Rooney	John T Boyd Company	Salt River Project
Canal Barge Company Inc	Kansas City Southern Railway	Sampling Associates International
Carbon Partners	KCBX Terminals Company	Savage Services, Inc.
Cargill, Incorporated	Kiewit Mining Group	SCANA Corporation
Central Coal Company	Kinder Morgan Terminals	SCH Terminal Co.
Charah, Inc.	Kirby Ocean Transport Company	Seperation Technologies
Chevron Mining	Koch Carbon, LLC	SGS Mineral Services
Cloud Peak Energy	Koehler-Bright Star, LLC	SNL Energy
Coal Marketing Company (USA) Inc.	L & L Energy, Inc.	Southern Company
Coal Network, Inc	LGE-KU Services Co.	Standard Laboratories, Inc.
CONSOL Energy, Inc.	Lower Colorado River Authority	Storm Technologies, Inc.
Constellation Energy	Luminant Energy	Taggart Global, LLC
Crouse Corp	MacArthur Energy	Tampa Electric Company
CSX Transportation	Marquette Transportation Company	TECO Coal Corp
Dairyland Power Cooperative	Martin Engineering	Trafigura AG
David J. Joseph Company	McGuireWoods LLP	Traxys North America
Dayton Power & Light Company	Mercuria Energy Trading	Tucson Electric Power Company
Dominion Energy	Metro Ports	Union Pacific Railroad Company
Drummond Company, Inc.	MidAmerican Energy Company	United Maritime Group
DTE Energy Coal Services	Midwest Generation EME	Usibelli Coal Mine, Inc.
Dynegy	Minnesota Power	We Energies
East Side River Transportation	MinTech Enterprises	Westar Energy
Enserco-Black Hills Power	Montana Rail Link, Inc.	Westmoreland Coal
Entergy	MRT, a CEMEX Company	White Energy Coal North America Inc.
Environmental Energy Services, Inc.	Murray Energy Corporation	White Oak Resources, LLC
Ernst & Young	NexGen Coal Services, Ltd.	Wisconsin Public Service Corporation
Evolution Markets LLC	Norfolk Southern Corporation	Wood Mackenzie
FirstEnergy	Norwest Corporation	Xcel Energy
Florida Marine Transporters	Novinda Corporation	Xcoal Energy & Resources
Foresight Energy, LLC	NRG Energy, Inc.	
FreightCar America	Nucor Corporation	

## Current American Coal Ash Association Members

### UTILITY MEMBERS (39)

AES Corporation  
Ameren Energy  
American Electric Power (AEP)  
Aurora Energy, LLC  
Basin Electric Power Cooperative  
Colorado Springs Utilities  
Colstrip Energy Limited Partnership  
Consumers Energy  
Dairyland Power Cooperative  
Dominion  
DTE Energy  
Duke Energy  
FirstEnergy Corp.  
Great River Energy  
JEA (formerly Jacksonville Electric Authority)  
Kansas City Power & Light  
LG&E and KU Services Company (formerly E.ON U.S.)  
Lower Colorado River Authority  
Midwest Generation LLC  
Montana-Dakota Utilities Co.  
Muscatine Power & Water  
Nebraska Public Power District  
Platte River Power Authority  
PPL Generation, LLC  
Public Service Company of New Hampshire  
Public Service Enterprise Group (PSEG)  
Raven Power  
Santee Cooper  
South Carolina Electric & Gas Company  
Southern Company  
Southern Illinois Power Cooperative  
Sunflower Electric Power Coop  
Tampa Electric Company  
Tennessee Valley Authority  
Tri-State Transmission & Generation Association, Inc.  
WE Energies  
Wisconsin Public Service  
Wolverine Power Supply Coop  
Xcel Energy

### MARKETER MEMBERS (16)

ASHCOR Technologies Ltd  
Ash Grove Resources LLC  
Boral Material Technologies Inc.  
Charah Environmental  
Headwaters Resources  
Holcim (US) Inc.  
Kansas City Fly Ash LLC  
Lafarge - NA  
MRT - A CEMEX Company  
Nebraska Ash  
Salt River Materials  
Separation Technologies LLC  
The SEFA Group  
Trans Ash  
VHSC Cement, LLC  
Waste Management

### SPECIALTY MARKETERS (13)

Beneficial Reuse Management  
Eagle Environmental Services, LLC  
Lehigh Cement  
McDonald Farms Enterprises, Inc.  
Mobile Abrasives, Inc.  
Romano Associates  
Pozzi-Tech, Inc.  
Reed Minerals (Harsco)  
Sphere One, Inc.  
Synthetic Materials (SYNMAT)  
U.S. Minerals  
USC Technologies  
USNR Energy Services

### ASSOCIATE MEMBERS (67)

ADA Environmental Solutions  
Advanced Wall Technologies, LLC  
AECOM  
Agu America, Inc.  
American Gypsum Company  
Clean Earth Dredging Technologies, LLC  
CalStar Products  
Carmeuse Lime & Stone  
CeraTech, Inc.  
CETCO  
CH2M Hill  
Civil & Environmental Consultants, Inc.  
Conestoga-Rovers & Associates  
Consolidated Terminals and Logistics Co.  
DiGioia Gray and Associates, LLC  
Draper Aden Associates  
DustMaster Enviro Systems  
Dynastone  
EnergySolutions  
Fiore & Sons, Inc.  
First Union Rail  
Flashfill Services, LLC  
FLSmith, Inc.  
GAI Consultants, Inc.  
GEI Consultants, Inc.  
Georgia-Pacific Gypsum, LLC  
Geosyntec Consultants  
Golder Associates  
Gradient  
GSE Lining Technology, LLC  
Haley & Aldrich, Inc.  
Haver Filling Systems, Inc.  
HDR Engineering  
Hilltop Enterprises, Inc.  
Hull & Associates, Inc.  
Joyce Engineering  
LB Industrial Systems  
Lhoist North America (formerly Chemical Lime Company)  
Magaldi Power SpA  
Maxxon Corporation  
Mississippi Lime Company  
National Gypsum Company  
Natural Resource Technology, Inc.  
Novinda Corp

Parsons  
Phillips and Jordan, Inc.  
Pinnacle Design/Build Group, Inc.  
PMI Ash Technologies, LLC  
Prairie State Generating Company  
River Consulting  
Rogers, Townsend & Thomas, PC  
S&ME, Inc.  
Saia Construction Company, LLC  
Schiff Hardin LLP  
Silar Services, Inc.  
Son-Haul, Inc.  
Stantec Consulting Services, Inc.  
Temple-Inland Inc.  
Terracon Consultants, Inc.  
TestAmerica Laboratories, Inc.  
The Ohio State University  
TransWood Carriers, Inc.  
United States Gypsum Company  
University of Kentucky - CAER  
University of Wyoming - Western Research Institute  
URS Corporation

### INDIVIDUAL MEMBERS (10)

Dawn Santoianni, Tau Technical Communications, LLC  
W. Lee Daniels, VA Tech Foundation  
David Goss, DCGoss Consulting, LLC  
Ross Guenther, Ceramext, LLC  
Kris Johnson, Aspen Gold Consulting  
Paul Koziar, Paul Koziar Consulting  
Cheri Miller, Gypsum Parameters  
Ishwar P. Murarka, Ish Inc.  
Don Saylak, Professor Emeritus, TAMU  
John Ward, John Ward Inc.

### HONORARY MEMBERS (19)

Allen Babcock  
Dale Baker  
Claude Brown  
Jim Burnell  
Craig Cain  
John H. Faber  
Dean Golden  
David J. Hassett  
Howard Humphrey  
Gary Jablonski  
Dennis Jones  
Oscar Manz  
James Merkel  
Dr. Tarun Naik  
James Plumb  
Joseph Pound  
Simons Prins  
Robert Styron  
Jim Weeks

### NON-UTILITY CCP PRODUCER MEMBERS (2)

Alcoa Generating Corporation  
Electric Energy, Inc.

## Current RMEL Members

ABB, Inc.	Colorado State University	Industrial Cooling Solutions
ABCO Industrial Sales, Inc.	Commonwealth Associates, Inc.	Intercounty Electric Coop
ADA-ES, Inc.	ComRent	Association
Advanced Motor Controls	Continental Divide Electric	Intermountain Rural Electric Assn.
Alexander Publications	Cooperative	ION Consulting
Alstom Power	Cooling Tower Depot	Irby
Altec Industries, Inc.	Corporate Risk Solutions, Inc.	Irwin Industries, Inc.- Power Plant
AMEC	County of Los Alamos Dept. of	Services
American Coal Council	Public Utilities	
AREVA Solar Inc.	CPS Energy	J.L. Hermon & Associates, Inc.
Arizona Electric Power Cooperative,		
Inc.	Delta Montrose Electric Assn.	Kahuna Ventures, LLC
Arizona Electrical Apparatus	DIS-TRAN Packaged Substations,	Kansas City Board of Public Utilities
Arizona Public Service	LLC	KD Johnson, Inc.
Arkansas River Power Authority	Dowdy Recruiting LLC	Kiewit
Asplundh Tree Expert Co.	E & T Equipment, LLC	Kit Carson Electric Cooperative
Associated Electric Cooperative,	E3 Consulting	Kleinfelder
Inc.	El Paso Electric Company	Klondyke Construction LLC
ATCO Emissions Management	Electrical Consultants, Inc.	
Austin Energy	Emerson Process Management	La Junta Municipal Utilities
AZCO INC.	Empire Electric Association, Inc.	La Plata Electric Association, Inc.
	Encompass Energy Services LLC	Lake Region Electric Coop Inc.
Babcock & Wilcox Company	Energy & Resource Consulting	Lamar Utilities Board
Babcock Power, Inc.	Group, LLC	Laminated Wood Systems, Inc.
Basin Electric Power Cooperative	Energy Reps	Las Animas Municipal Light &
Beta Engineering	Equal Electric, Inc.	Power
Black & Veatch Corp.	ESC engineering	Lauren Engineers & Constructors
Black Hills Corporation	Estes Park Light & Power Dept.	LEADERSHIP A Business
Black Hills Electric Cooperative	Exponential Engineering Company	Imperative, Inc.
BMT Acquisition, LLC		Lewis Associates, Inc.
Boilermakers Local #101	Foothills Energy Services Inc.	Lincoln Electric System
Boone Electric Cooperative	Fort Collins Utilities	Llewellyn Consulting
Border States Electric	Foster Wheeler	Longmont Power and
Bowman Consulting Group	Fuel Tech, Inc.	Communications
Brand Energy & Infrastructure		Loup River Public Power District
Services	Gallup Joint Utilities	Loveland Water & Power
Brooks Manufacturing Company	GE Power & Water	Luminate, LLC
Burns & McDonnell	Golder Associates, Inc.	
Butler Public Power District	Grand Island Utilities	
	Grand Valley Rural Power Lines,	
C.I.Agent Solutions	Inc.	Magna IV Engineering Inc.
Carbon Power & Light, Inc.	Great Southwestern Construction,	Marsulex Environmental
Casey Industrial, Inc.	Inc.	Technologies
CB&I	Gunnison County Electric	Missouri River Energy Services
CBS Arc Safe	Association, Inc.	Mitsubishi Power Systems
Center Electric Light & Power		Americas, Inc.
System	Hamilton Associates, Inc.	Morgan County Rural Electric Assn.
CH2M HILL	Hamon Research - Cottrell	Mountain Parks Electric, Inc.
Chimney Rock Public Power District	Harris Group, Inc.	Mountain States Utility Sales
City of Alliance Electric Department	Hartigan Power Equipment	Mountain View Electric Assn.
City of Aztec Electric Department	Company	Mycoff, Fry & Prouse LLC
City of Cody	Hawkeye Helicopter LLC	
City of Farmington	HDR, Inc.	NAES Corp.
City of Fountain	High Energy Inc. (HEI)	Navigant
City of Gillette	Highline Electric Assn.	Navopache Electric Cooperative,
City of Glenwood Springs	Hitachi Power Systems America,	Inc.
City of Imperial	Ltd	Nebraska Public Power District
City of Yuma	Holy Cross Energy	NEI Electric Power Engineering,
Co-Mo Electric Cooperative	Homer Electric Association, Inc.	Inc.
CoBank	Howard Electric Cooperative	New Mexico State University
Colorado Energy Management, LLC	Hubbell Power Systems	NoI-Tec Systems, Inc.
Colorado Powerline, Inc.	Hughes Brothers, Inc.	Nooter/Eriksen, Inc.
Colorado Public Utilities		Norris Public Power District
Commission	IBEW, Local Union 111	North Platte Light & Power
Colorado Rural Electric Association	IMCORP	Northeast Community College
Colorado Springs Utilities	Independence Power & Light	Northwest Rural Public Power
		District
		Novinda Corporation

## Current RMEL Members

NRG Reliability Solutions LLC NV Energy	Sega Inc. Siemens Energy Inc. Sierra Electric Cooperative, Inc. Sierra Southwest Cooperative Services, Inc. SNC-Lavalin Constructors Inc. Solomon Associates South Central PPD Southeast Colorado Power Assn. Southeast Community College Southern Pioneer Electric Company Southwest Energy Systems LLC Southwest Generation Southwest Transmission Cooperative, Inc. Southwestern Power Administration Southwire Company SPIDAWeb LLC Springfield Municipal Light & Power SPX Cooling Technologies SPX Transformer Solutions, Inc. SRP St. George Energy Services Department Stanley Consultants, Inc. STEAG Energy Services LLC Storm Technologies Inc. STRUCTURAL Sturgeon Electric Co., Inc. Sulphur Springs Valley Electric Cooperative Sundt Construction Sunflower Electric Power Corporation Switchgear Solutions, Inc.	Transmission & Distribution Services, LLC TRC Engineers, Inc. Trees Inc Tri-State Generation and Transmission Assn. Trimble Trinidad Municipal Light & Power
O I C Outage Omaha Public Power District Omnicon Technical Sales Osmose Utilities Services, Inc. Otero County Electric Cooperative	U.S. Water Services UC Synergetic Ulteig Engineers, Inc. United Power, Inc. Universal Field Services Inc. University of Idaho Utility Executive Course College of Business and Economics UNS Energy Corporation URS Energy & Construction Inc.	
PacifiCorp Panhandle Rural Electric Membership Assn. PAR Electrical Contractors, Inc. PCS Mobile Peterson Co. Pike Electric, LLC Pine Valley Power, Inc. Pioneer Electric Cooperative, Inc. Pipefitters Local Union #208 Platte River Power Authority PNM Resources Poudre Valley Rural Electric Assn. Power & Industrial Services Corp POWER Engineers, Inc. Power Equipment Specialists, Inc. Power Pole Inspections Power Product Services PowerQuip Corporation Precision Resource Company Provo City Power	Victaulic Wärtsilä North America, Inc. Wazee Companies LLC WESCO Westar Energy Western Area Power Administration Western Line Constructors Chapter, Inc. NECA Western Nebraska Community College Western United Electric Supply Westinghouse Electric Company Westwood Professional Services Wheat Belt Public Power District Wheatland Electric Cooperative Wheatland Rural Electric Assn. White River Electric Assn., Inc. White River Valley Electric Cooperative WHPacific, Inc. Willbros Engineers William W. Rutherford & Associates Wyrulec Company	
Quanta Services  REC Associates Reliability Management Group (RMG) Reliable Power Consultants, Inc. Rkneal, Inc.	T & R Electric Supply Co., Inc. Technically Speaking, Inc. TestAmerica Laboratories, Inc. The Empire District Electric Company The Louis Berger Group Thomas & Betts Steel Structures Division Thomas & Betts, Utility Total-Western, Inc. Towill, Inc. Trachte, Inc. "Buildings & Shelters" Trans American Power Products, Inc.	Xcel Energy  Y-W Electric Association, Inc. Yampa Valley Electric Association, Inc.  Zachry Holdings, Inc.
Sabre Tubular Structures Safety One Inc. SAIC San Isabel Electric Assn. San Luis Valley Rural Electric Cooperative San Marcos Electric Utility San Miguel Power Assn. Sangre De Cristo Electric Assn. Sargent & Lundy Savage Services Corporation Sciencetech		

## Current Coal Trading Association Members

Alpha Coal Sales Co. LLC Ameren Corp Arch Coal Sales, LLC Argus Media, Inc. Bunge Cargill, Inc. Cloud Peak Energy Resources, LLC CME Group Colorado Springs Utilities CONSOL Energy Dominion Generation	DTE Coal Services Duke Energy Dynergy Eagle River Coal, LLC Energy Ventures Analysis, Inc. Evolution Markets Inc. ICAP Energy LLC IntercontinentalExchange Kiewit Mining Group Inc. Koch Carbon, LLC Mercuria Energy Trading, Inc.	NRG Energy, Inc. Patriot Coal Peabody Coal Trade LLC PPL EnergyPlus, LLC River Trading Company, LTD RWE Trading Americas Inc Starfuels, Inc. Tennessee Valley Authority (TVA) Trayport Inc. United Bulk Terminals Vitol
---	--	---

**On-line Real Time  
Analysis for  
Process Control**

- Coal
- Coke
- Iron Ore
- Industrial minerals
- and many others

Over 850  
units installed  
in 51 countries

Contact us for advice:  
Tel: +61 7 3710 8400  
Fax: +61 7 3710 8499  
[www.scantech.com.au](http://www.scantech.com.au)  
[sales@scantech.com.au](mailto:sales@scantech.com.au)

**COALSCAN**

**COALSCAN**

THROUGH BELT  
ELEMENTAL  
ANALYSER



**CM 100**

COKE MOISTURE  
MONITOR



**TBM 200 SERIES**

MICROWAVE  
MOISTURE  
MONITOR

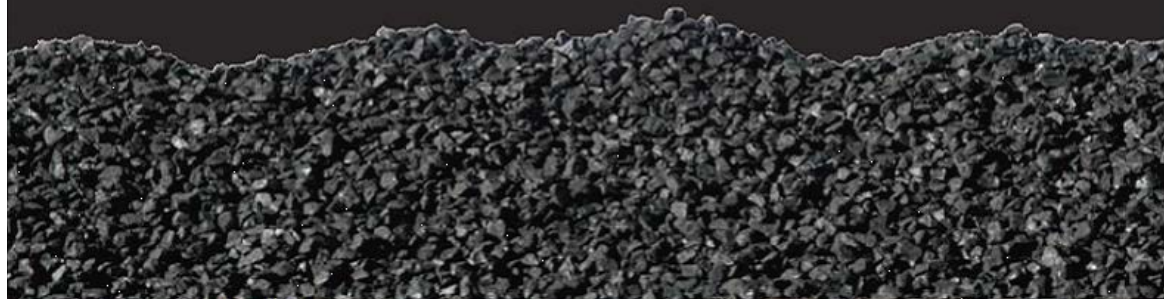


**CTL**

CONSOLIDATED TERMINALS AND LOGISTICS CO.

Invest with the **BEST**

**CTL** for your **inbound** and **outbound** **COAL SHIPMENTS**



Contact: **Tom Torretti** - P: 314.835.9332 - Email: [Tom.Torretti@cgb.com](mailto:Tom.Torretti@cgb.com) A Division of **LCB** Enterprises, Inc.

[www.cctlonline.com](http://www.cctlonline.com)

## INDUSTRY EVENTS

### AMERICAN COAL COUNCIL

DECEMBER 7, 2015

Coal Trading Conference Park City

### NATIONAL COAL

#### TRANSPORTATION ASSOCIATION

SEPTEMBER 14-16, 2015

Forty-First Annual Business Meeting  
and General Conference  
Denver, Colorado

APRIL 10-13, 2016

Spring General Conference  
New Orleans, Louisiana

### RMEL

SEPTEMBER 20, 2015

2015 Fall Executive Leadership and  
Management Convention  
Kansas City, MO

OCTOBER 1, 2015

Planning Session: 2016 Spring  
Conference Lone Tree, CO

OCTOBER 7, 2015

Distribution Engineers Workshop  
Lone Tree, CO

OCTOBER 15, 2015

Renewable Planning and Operations  
Conference Lone Tree, CO

### AMERICAN SOCIETY OF MINING AND RECLAMATION

JUNE 4-10, 2016

ASMR National Conference  
Spokane, Washington

### COAL TRADING ASSOCIATION

DECEMBER 7-8, 2015

Coal Trading Conference  
New York City

*To submit more events for publish or to include  
information about your organizations calendar  
of events, please email  
[info@martonickpublications.com](mailto:info@martonickpublications.com) . Thank you.*



# DOWN TIME SUCKS

**Protect your equipment.  
Avoid down time. Make more money.**

HardSteel manufactures chromium-carbide overlay plate  
and offers complete value-added services.  
Call or click today to see how HardSteel can help.  
Because down time really does suck.



**HARDSTEEL**



HardSteel.com



205.343.9100



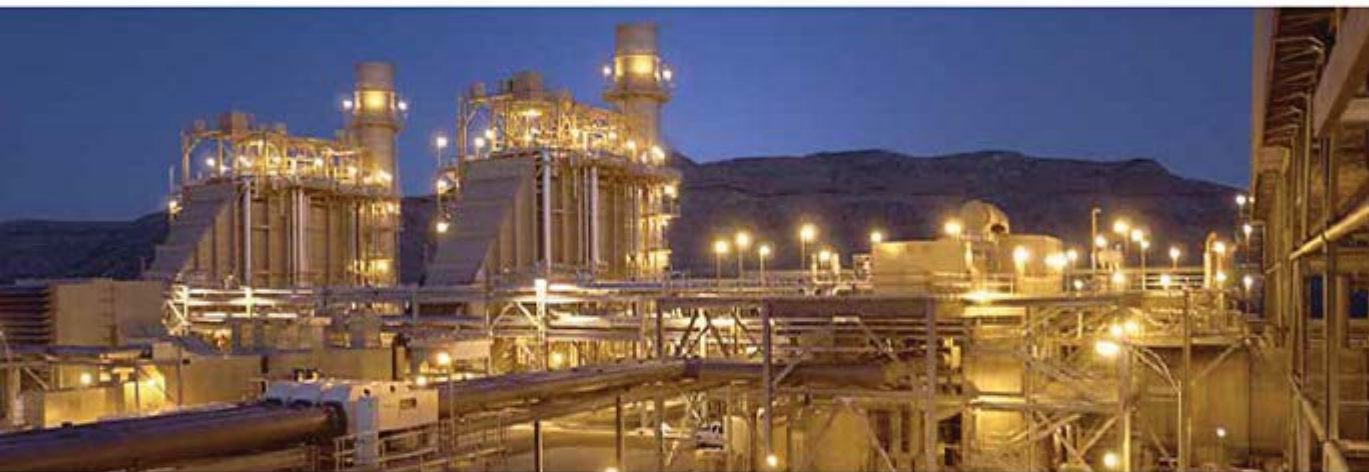
## Making Too Many Calls?

Freight Car Parts...  
Locomotive Parts...  
AEI Equipment...



**Comet**

One call does it all! 800-878-9440

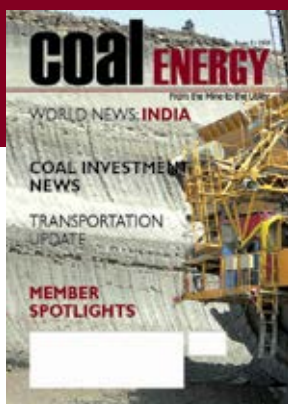


At CH2M HILL, we do more than engineer, procure, and construct. We help you deliver EPC—energy to power your community.

Our global engineering, procurement, and construction professionals deliver tailored solutions to create and operate power generation facilities to produce energy from natural gas, coal, oil, and renewable resources. This experience allows us to provide services ranging from site selection and feasibility studies, through design, procurement, and construction, to commissioning and plant start-up.

CH2M HILL delivers EPC and that's energy to power your community.

**Outperformance™**  
[ch2mhill.com/power](http://ch2mhill.com/power)



## Upcoming Issue

WORLD NEWS: INDIA  
COAL INVESTMENT NEWS  
TRANSPORTATION UPDATE  
MEMBER SPOTLIGHTS

## Index to Advertisers

Amsted Rail	27,28	<a href="http://www.amstedrail.com">www.amstedrail.com</a>
Borton, L.C	23	<a href="http://www.borton.biz">www.borton.biz</a>
CH2M Hill	35	<a href="http://www.ch2mhill.com/power">www.ch2mhill.com/power</a>
Comet Industries	34	N/A
Consolidated Terminals LC	33	<a href="http://www.ctlconline.com">www.ctlconline.com</a>
Derrick Corporation	23	<a href="http://www.derrick.com">www.derrick.com</a>
Dry Systems Technologies	OBC	<a href="http://www.drysystemstech.com">www.drysystemstech.com</a>
First Union Rail	21	<a href="http://www.firstunionrail.com">www.firstunionrail.com</a>
Fly Ash Direct	19	<a href="http://www.flyashdirect.com">www.flyashdirect.com</a>
Freight Car America	6	<a href="http://www.freightcaramerica.com">www.freightcaramerica.com</a>
GE Rail	IBC	<a href="http://www.gecapital.com/railservices">www.gecapital.com/railservices</a>
HardSteel, Inc.	34	<a href="http://www.hardsteel.com">www.hardsteel.com</a>
La Farge	25	<a href="http://www.lafargenorthamerica.com">www.lafargenorthamerica.com</a>
Martins Engineering	22	<a href="http://www.martin-eng.com">www.martin-eng.com</a>
McDonald Farm Enterprises, Inc	23	<a href="http://www.mcdonaldfarmsinc.com">www.mcdonaldfarmsinc.com</a>
Progress Rail	2	<a href="http://www.progressrail.com">www.progressrail.com</a>
Scantech	33	<a href="http://www.scantech.com.au">www.scantech.com.au</a>
Son Haul Inc	7	<a href="http://www.son-haul.com">www.son-haul.com</a>
Trinity Rail	26	<a href="http://www.trinityrail.com">www.trinityrail.com</a>
Utter Construction, Inc	18	<a href="http://www.utterconstruction.net">www.utterconstruction.net</a>
White Oak Resources LLC	7	<a href="http://www.whiteoakresources.com">www.whiteoakresources.com</a>

GE Capital  
Rail Services

# Engineering better businesses, today and tomorrow.

**At GE Capital, keeping your business on track is what we do best.**

With more than a century of industry experience and one of the most diverse fleets in North America, GE Capital, Rail Services is a name the rail industry has come to know and trust. From lending, leasing and maintenance services, to regulatory support and compliance, our team of experts will make sure you have more than just working capital. You'll have the intellectual capital you need to take your business where you want to go.

Set your business's wheels in motion.

Speak to one of our Rail Services professionals today at **800-445-6126**

Visit us online at **[www.gecapital.com/railservices](http://www.gecapital.com/railservices)**



imagination at work

# We Build...You Haul

**Experienced OEM Supplier of New Diesel  
Powered Mining Equipment**



**Dry Systems  
Technologies®**

Dry Systems Technologies (DST®) introduces new 18.5 Ton Diesel Hauler to its line of OEM mobile underground supply and support vehicles. Utilizing the Cummins QSB4.5 and C8.3 engines, the new range of product haulers are available for both Permissible and Non-Permissible mining applications. Utilizing DST's patented state of the art Dry Scrubber Diesel Emissions Control Technology, these machines provide ultra clean performance removing up to 97 percent of total DPM



*7.5 Ton Tractor Supply Vehicle*



*3.5 Yard Permissible Scoop*

## **Dry Systems Technologies**

10420 Rising Court  
Woodridge, Illinois 60517

**(630) 427-2051**

1430 U.S. Hwy. 45 N  
Vienna, Illinois 62995

**(618) 658-3000**

3175 South 125 West  
Price, UT 84501

**(435) 637-0825**

[www.drysystemstech.com](http://www.drysystemstech.com)